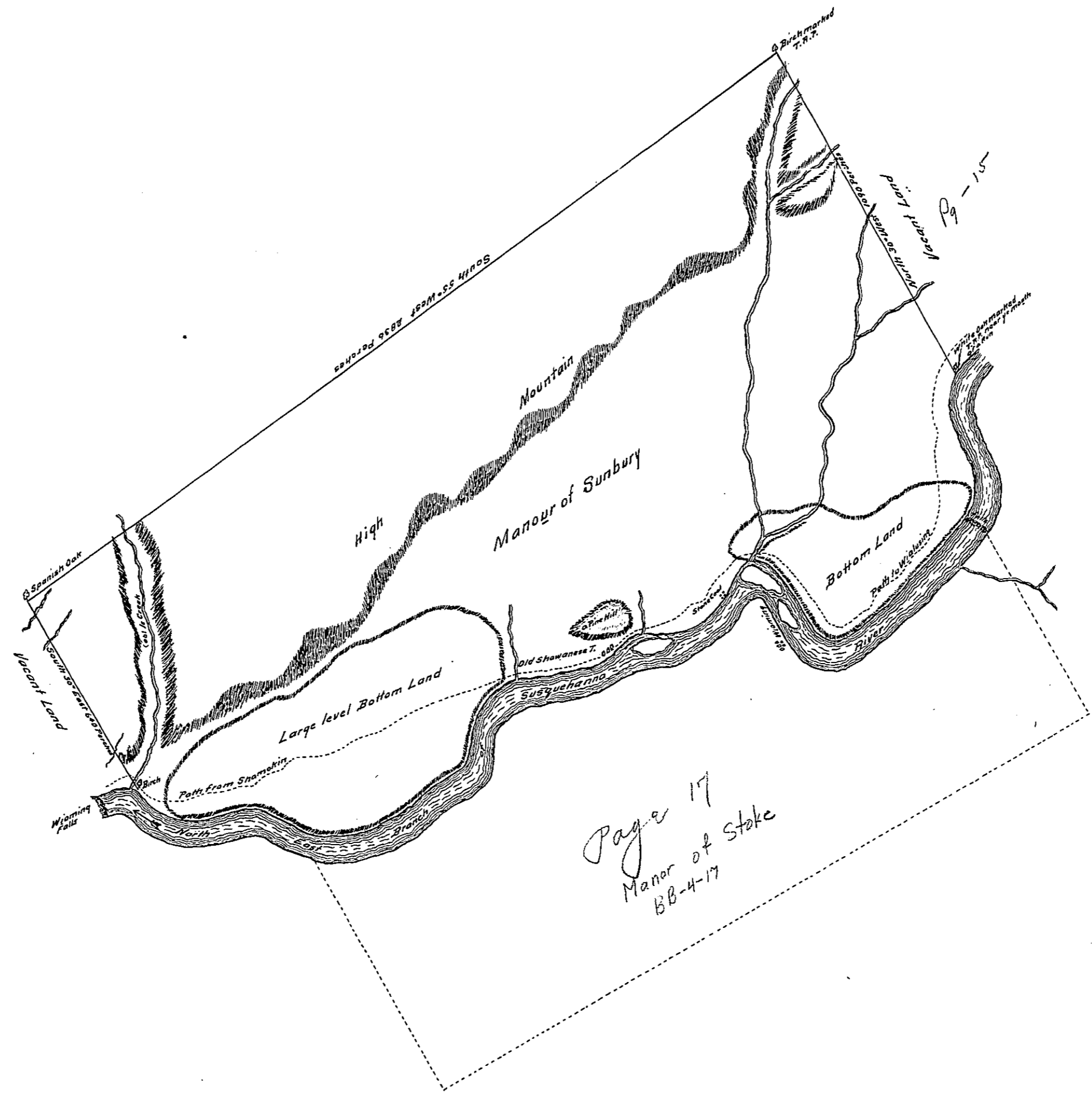


(Endorsement on Buck)
 Plat^d of 7th Feby 1769
 Manor of Sunbury

33



Courses Distances
 Up Susquehanna

1. S. 41 E.	134
2. S. 80 E.	114
3. N. 75 E.	157
4. S. 67 E.	100
5. S. 74 E.	154
6. N. 88 E.	90
7. N. 68 E.	160
8. N. 48 E.	126
9. N. 63 E.	109
10. N. 8 E.	218
11. N. 78 E.	228
12. N. 76 E.	204
13. N. 82 E.	116
14. S. 80 E.	90
15. N. 73 E.	120
16. N. 42 E.	170
17. N. 20 E.	72
18. East	54
19. S. 34 E.	80
20. S. 36 E.	64
21. S. 28 E.	134
22. S. 80 E.	50
23. N. 76 E.	64
24. N. 55 E.	80
25. N. 44 E.	120
26. N. 42 E.	94
27. N. 7 E.	56
28. N. 14 W.	60
29. N. 22 W.	60
30. N. 22 W.	60
31. N. 12 W.	40
32. N. 10 W.	36
33. N. 5 E.	58
34. N. 14 E.	34
35. N. 37 E.	24
to y ^e White oak	

By Virtue of a Warrant dated the 29th Day of October 1768, Surveyed the 8th 9th &c Days of December 1768, to the use of the Honorable the Proprietaries of the Province of Pennsylvania, the above described Tract of Land situate on the North West Side of the North East Branch of Susquehanna River, opposite to Wyoming, containing Twenty thousand Acres of Land and Allowance of Six P. Cent.
 P. Wmth Scull

In Testimony, That the above is a copy of the original, remaining on file in the Department of Internal Affairs of Pennsylvania, made conformably to an Act of Assembly, approved the 16th day of February A.D. 1833, I have therunto set my Hand and caused the Seal of the said Department to be affixed at Harrisburg, this third day of April A.D. 1912.

Henry Houder
 Secretary of Internal Affairs.

50000